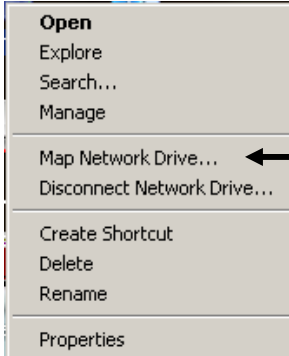
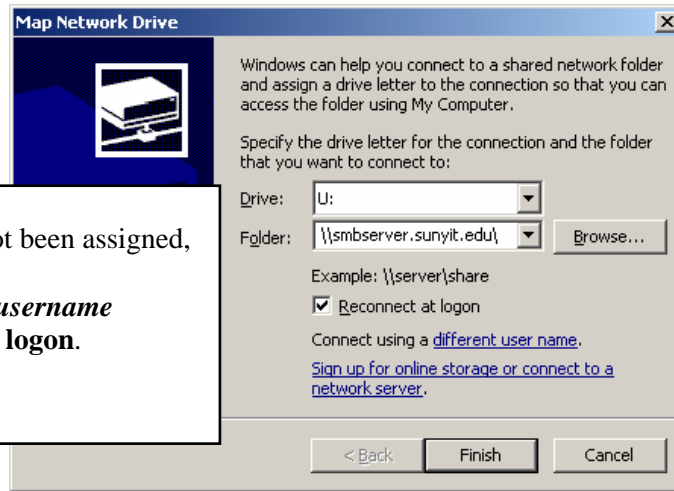


Create a Smbserver Mapping

1. Right click on the **My Computer** or **My Network Places** icon on your desktop to bring up the menu.



2. Select **Map Network Drive**



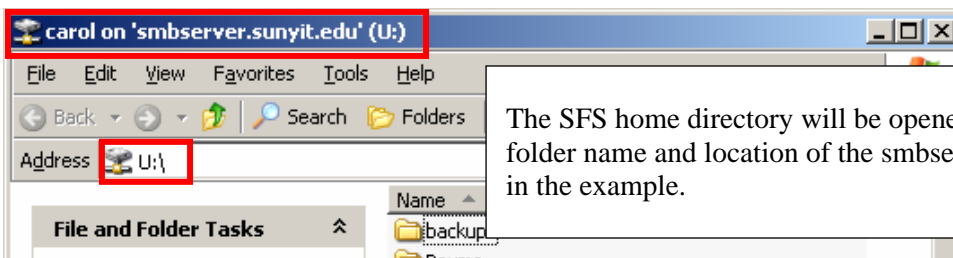
3. Select a drive that has not been assigned, enter
`\\smbserver.sunyit.edu\username`
then check **Reconnect at logon**.

Click Finish.

4. Enter your SITNet username and password, check **Remember my password**.



Click OK.



The SFS home directory will be opened. Note the folder name and location of the smbserver mapping in the example.

Contact the [User Services Help Desk](#) if you encounter problems or need creating the mapping.